

# VPP REGION VII-WELCOME

**CERTIFIED ENVIRONMENTAL MANAGEMENT, LTD.**

**MANAGEMENT AND TEAM**

**THANK YOU FOR COMING TO OUR SITE!**

**May 4-May 6, 2010**



# Hazard Prevention and Control

- **General Information**
- **Assurance of Commitment**
- **Management Leadership and Employee Involvement**
- **Worksite Analysis**
- **Hazard Prevention and Control**
- **Safety and Health Training**



# CEM STAR VPP ADVOCATES

- Since 1982 our CEM directors have been encouraging our customers to pursue VPP
- Support the VPPPA National Organization with “Seventh Inning Stretch” and bringing in Hall of Fame Baseball Players
- Provided National Speeches to Support
- Believe in Best Practice Strategy Internally and Externally

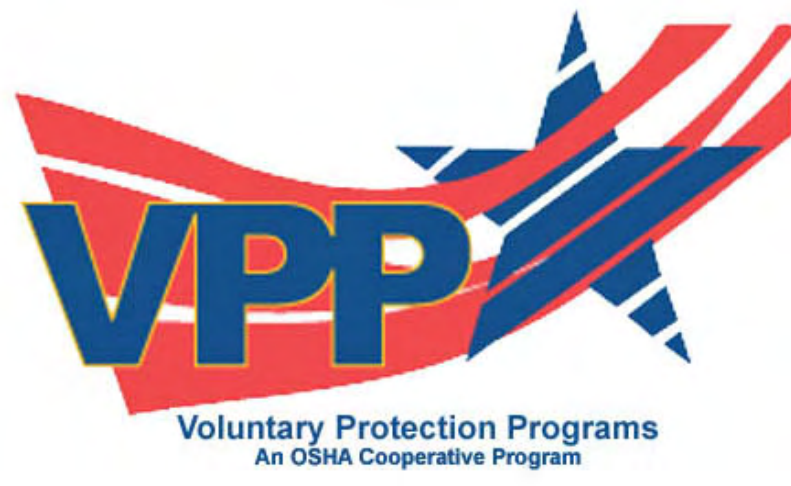
# Who Is CEM?

- Certified Environmental Management, Ltd. (CEM) has been providing Industrial Hygiene (IH) Services for almost 23 years to over 800 clients in 49 states, Canada, Europe, Asia, Italy, and South America.
- Our services support all phases of the Voluntary Protection Program in part or in total. Assistance ranges from supporting VPP to critical health and safety field monitoring.
- Since 1989, our computerized field sampling, chemical exposure assessment, laboratory analysis, sample planning and computerized simulation tools have assisted our leading edge clients in establishing their VPP rating.
- CEM has one of the most accredited Industrial Hygiene Laboratories in the industry. Our team strategically has pursued multiple types of performance programs throughout the world:
  - AIHA
  - ISO 17025 Laboratory Certification
  - German BGIA Program
  - ELPAT-Soil, Wipes, Bulk
  - United Kingdom WASP Program
  - Asia Pacific Laboratory Accreditation Cooperation (APLAC)
- WEB-BASED INDUSTRIAL HYGIENE LEADERSHIP
  - [www.cemih.com](http://www.cemih.com)



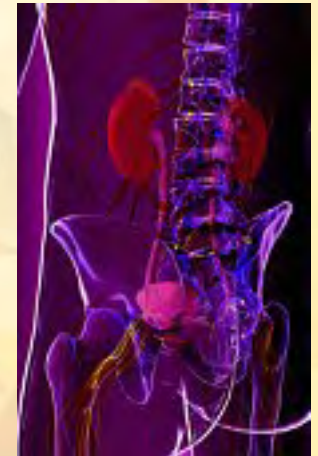
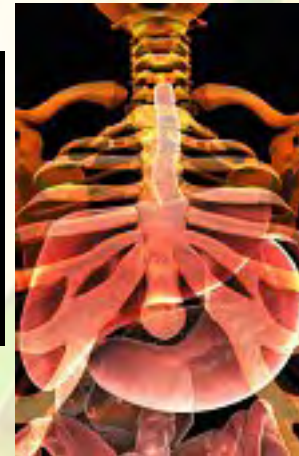
# Assurance of Commitment

- Committed to “best practices” in safety and health protection to employees through management systems and employee involvement
- Committed to achievement and maintenance of the Star Program requirements
- Committed to comply with the OSHA Act—through the application of many tools
- Committed to fixing any deficiencies no later than 90 days—immediate if possible
- Committed to this being our site employee/team’s program
- Committed to always protect our team from any points of discrimination for any reason whatsoever
- Committed to providing every aspect of the safety and health parameters of our business to all team members.
- Committed to reporting any type of injury at this site together. Rates will always be a whole.



# EMPLOYEE INVOLVEMENT

- Employees conduct audit of safety equipment in the laboratory on a quarterly basis.
- Employees complete job safety analysis (JSA) for all applicable analysis in which they are involved in.
- Employees/Team Members are full partners in the monthly safety meetings.



# WORKSITE ANALYSIS

- Hazards that could cut or penetrate clothing or skin
- Hazards from chemical exposures and potential leaks and spills
- Hazards from dust, smoke, fumes, or vapors
- Hazards from high temperatures
- Hazards from falling objects
- Ergonomic-Source of Motion
- Sources of Optical Radiation



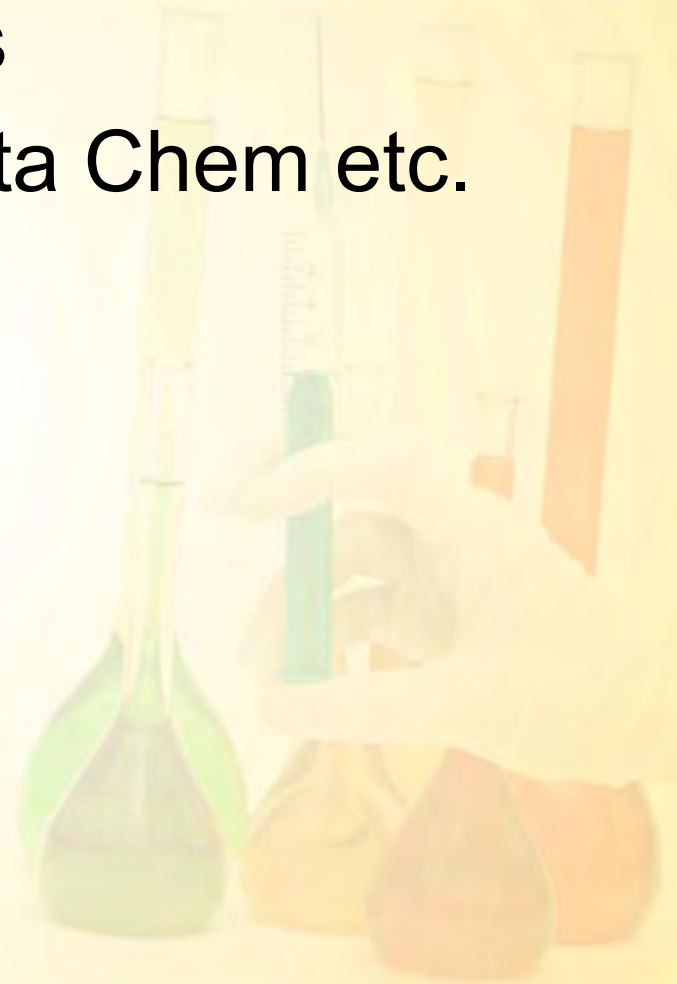
# HAZARD PREVENTION AND CONTROLS

- Safety Concerns Tracking Form
- Our Board Certified Safety Professional continuously reviews protocols and is prepared to conduct multiple forms of statistical analysis, Boolean algebra, and fault tree analysis should the situation be deemed appropriate. Utilizing any of the following applications:
  - Log Normal
  - Chi Square Test
  - Standard Deviation
  - Z Score
  - Coefficient of Variation
  - T Test
  - Coefficient Correlation
  - PSM (1910.119)
  - Preliminary Hazard Analysis (PHA)
  - Fault Hazard Analysis (FHA)
  - Operating Hazard Analysis (OHA)
  - Management Oversight and Risk Tree (MORT)
  - System Safety Engineering Report (SSER)
  - System Safety Program Plan (SSPP)
  - Job Instruction Training (JIT)
  - Final Acceptance Review (FAR)
  - Hazard and Operability Study (HAZOP)
  - Failure Mode Effects and Critical Analysis (FMECA)
  - Subsystem Hazard Analysis (SSHA)
  - Cause Consequence Analysis (CCA)



# Safety and Health Training

- Continuous—Never Stops
- Through AIHA/ACGIH/Data Chem etc.
- National Conferences
- Regional Conferences
- University Symposiums
- ABIH Board Based
- BCSP Board Based



# Thank You!



- Knowledge
- Service
- Leadership
- Guidance
- Time
- Stewardship
- Insight

